

**Anti-Vasopressin V2 Receptor Antibody**  
**Rabbit polyclonal antibody to Vasopressin V2 Receptor**  
**Catalog # AP60541****Specification**

---

**Anti-Vasopressin V2 Receptor Antibody - Product Information**

Application	WB, IF/IC
Primary Accession	<a href="#">P30518</a>
Other Accession	<a href="#">O88721</a>
Reactivity	Human, Mouse, Rat, Monkey
Host	Rabbit
Clonality	Polyclonal
Calculated MW	40279

**Anti-Vasopressin V2 Receptor Antibody - Additional Information****Gene ID** 554**Other Names**

ADHR; DIR; DIR3; V2R; Vasopressin V2 receptor; V2R; AVPR V2; Antidiuretic hormone receptor; Renal-type arginine vasopressin receptor

**Target/Specificity**

Recognizes endogenous levels of Vasopressin V2 Receptor protein.

**Dilution**WB~~WB (1/500 - 1/1000), IF/IC (1/100 - 1/500)  
IF/IC~~N/A**Format**

Liquid in 0.42% Potassium phosphate, 0.87% Sodium chloride, pH 7.3, 30% glycerol, and 0.09% (W/V) sodium azide.

**Storage**

Store at -20 °C. Stable for 12 months from date of receipt

**Anti-Vasopressin V2 Receptor Antibody - Protein Information****Name** AVPR2**Synonyms** ADHR, DIR, DIR3, V2R**Function**

Receptor for arginine vasopressin. The activity of this receptor is mediated by G proteins which activate adenylate cyclase. Involved in renal water reabsorption.

**Cellular Location**

Cell membrane; Multi-pass membrane protein

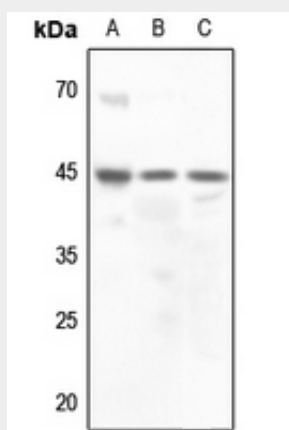
**Tissue Location**

Kidney.

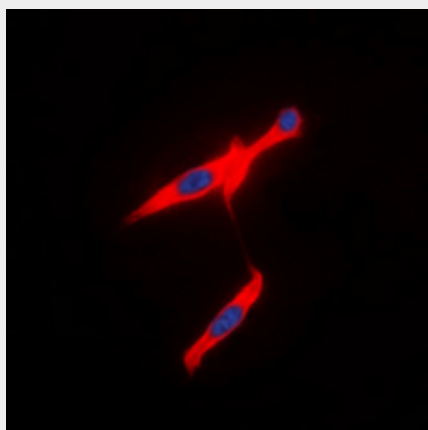
**Anti-Vasopressin V2 Receptor Antibody - Protocols**

Provided below are standard protocols that you may find useful for product applications.

- [Western Blot](#)
- [Blocking Peptides](#)
- [Dot Blot](#)
- [Immunohistochemistry](#)
- [Immunofluorescence](#)
- [Immunoprecipitation](#)
- [Flow Cytometry](#)
- [Cell Culture](#)

**Anti-Vasopressin V2 Receptor Antibody - Images**

Western blot analysis of Vasopressin V2 Receptor expression in DLD (A), mouse muscle (B), rat kidney (C) whole cell lysates.



Immunofluorescent analysis of Vasopressin V2 Receptor staining in HEK293T cells. Formalin-fixed cells were permeabilized with 0.1% Triton X-100 in TBS for 5-10 minutes and blocked with 3% BSA-PBS for 30 minutes at room temperature. Cells were probed with the primary antibody in 3% BSA-PBS and incubated overnight at 4 °C in a humidified chamber. Cells were washed with PBST and incubated with a DyLight 594-conjugated secondary antibody (red) in PBS at room temperature in

the dark. DAPI was used to stain the cell nuclei (blue).

#### **Anti-Vasopressin V2 Receptor Antibody - Background**

KLH-conjugated synthetic peptide encompassing a sequence within the center region of human Vasopressin V2 Receptor. The exact sequence is proprietary.